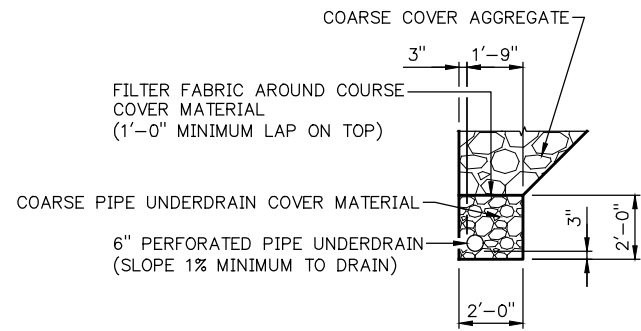


EXCAVATION PLAN

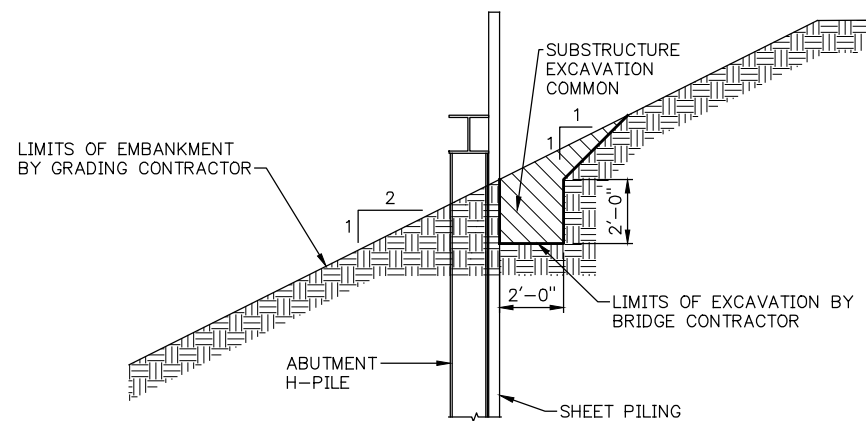


TYPICAL SECTION PIPE UNDERDRAIN (PERPENDICULAR TO ABUTMENT)

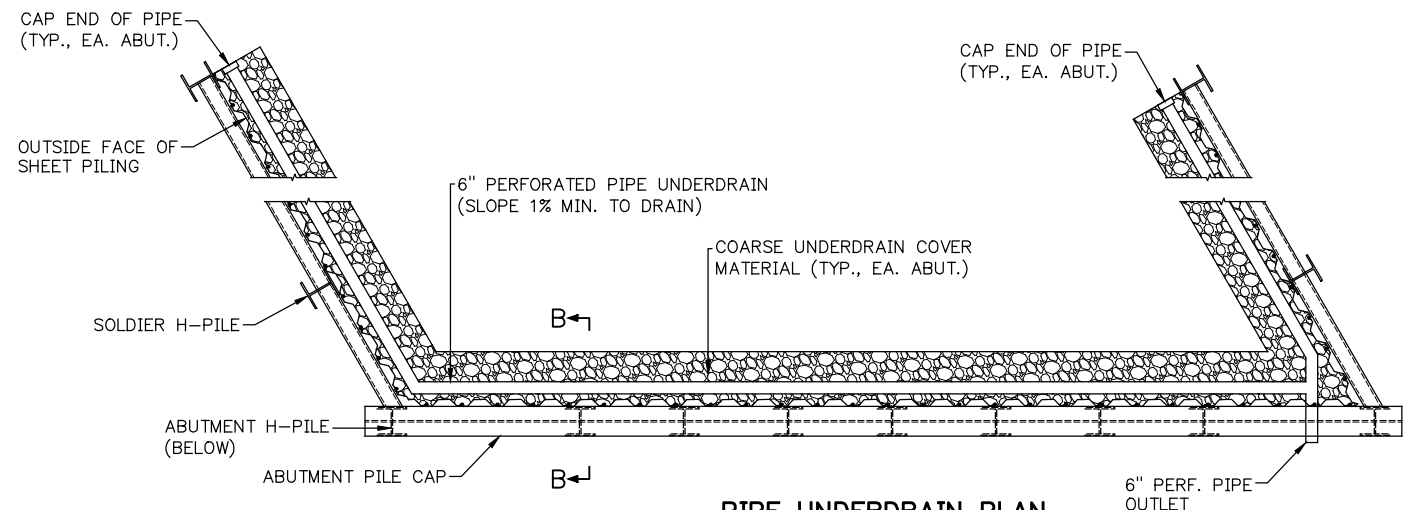
NOTE: EXTENT, LOCATION AND DEPTH OF 6" NON-PERFORATED PIPE UNDERDRAIN MAY BE ADJUSTED BY THE ENGINEER DURING CONSTRUCTION. ALL COST OF PIPE UNDERDRAIN COVER MATERIAL, FILTER FABRIC, TRENCH EXCAVATION, STANDARD BEDDING MATERIAL, AND EQUIPMENT AND LABOR FOR THEIR INSTALLATION SHALL BE INCLUDED IN THE CONTRACT UNIT PRICE OF "6" PERFORATED PIPE UNDERDRAIN ROUND" AND "6" NON-PREF. PIPE UNDERDRAIN RND.". INSTALLATION SHALL BE AS SHOWN ON THE PLANS AND ON STANDARD CB26..32-C-SK30-ABUT-MISC. FOR DETAILS OF PIPE UNDERDRAIN NOT SHOWN SEE STD. CB26..32-C-SK30-ABUT-MISC.

COARSE COVER AGGREGATE SHALL BE PAID FOR AS "STANDARD BEDDING MATERIAL, CLASS B".

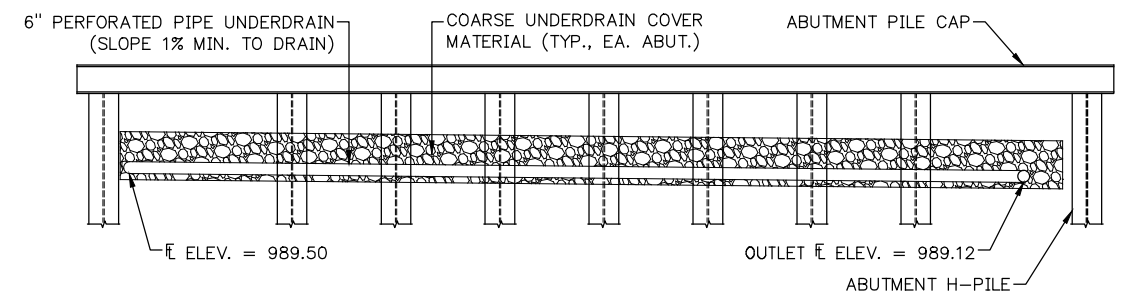
BACKFILL NOTE: COARSE PIPE UNDERDRAIN COVER MATERIAL SHALL NOT BE PLACED UNTIL THE PILOT HOLE CONCRETE HAS ATTAINED A STRENGTH OF 3000 P.S.I.



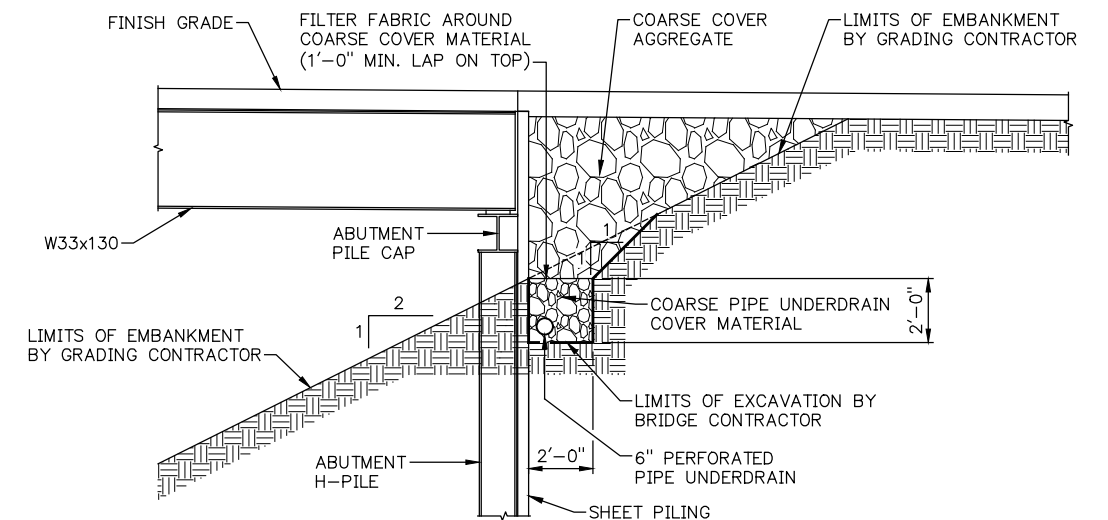
SECTION A-A (PERPENDICULAR TO ABUTMENT)



PIPE UNDERDRAIN PLAN
ABUTMENT 1 PIPE UNDERDRAIN SHOWN. MIRROR FOR ABUTMENT 2.



PIPE UNDERDRAIN PLAN



SECTION B-B (PERPENDICULAR TO ABUTMENT)

SUBSTRUCTURE EXCAVATION AND PIPE UNDERDRAIN DETAILS (BRIDGE "B")

© SURVEY STA. 314+58.28
State Job No. 28312(04) Sheet No. 32